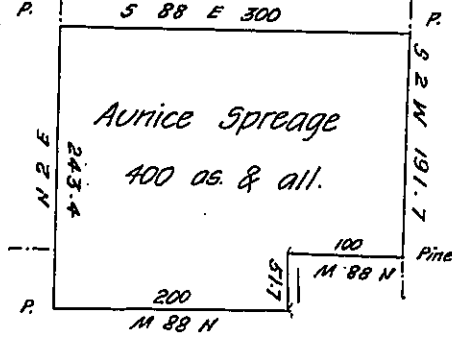


Thos Woolley



John McDaniel

Phebe Young

Draft of a tract of land situate in the township of Wilkesbarre in Luzerne County adjoining lands Phebe Young and others containing four hundred acres of land besides the usual allowance of 6 pr. Ct. for roads &c. Surveyed for Aunice Spreage forty or forty one years ago as appears by blocking the line trees upon the ground and resurveyed the 8th day of May 1839 by virtue of her warrant dated the 8th day of January 1793.

Z. H. Stevens D.S.

To Jacob Sallade Esq.^r for Luzerne County
 Surveyor General

Approved and certified by me this 17th January 1840

Henry Colt D.S.

IN TESTIMONY that the above is a copy of the original remaining on file in the Department of Internal Affairs of Pennsylvania, made conformably to an Act of Assembly approved the 16th day of February 1833, I have hereunto set my hand and caused the Seal of said Department to be affixed at Harrisburg, this seventh day of March 1907

Jacob P. Brown
 Secretary of Internal Affairs.